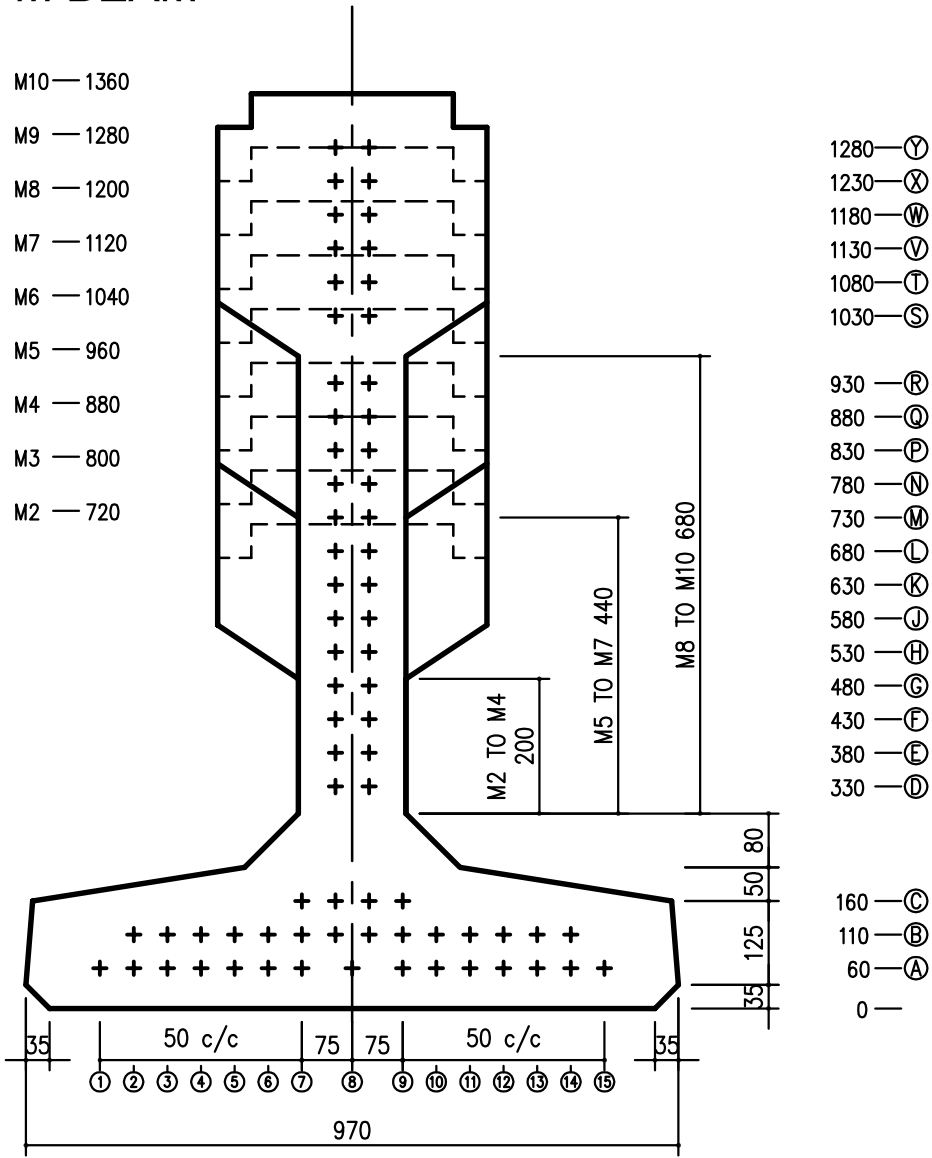


M BEAM



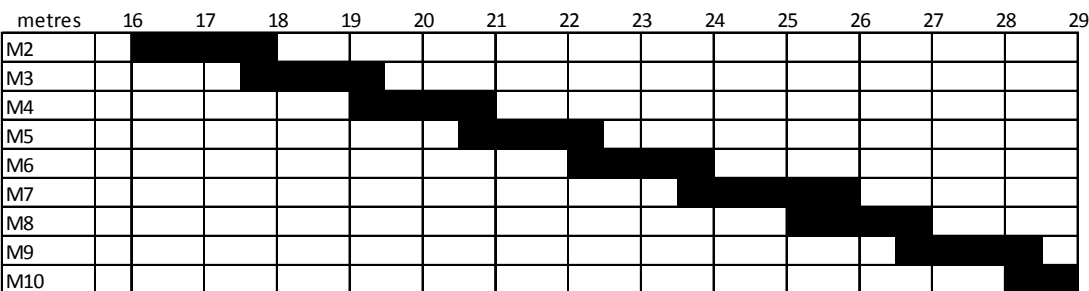
Section properties

Design self weight per unit volume has been taken as 25kN/m³

Section No	Depth (mm)	Area (mm) ²	Yb (mm)	Zt (mm ³ x 10 ⁶)	Zb (mm ³ x 10 ⁶)	App self weight KN/m
M2	720	314600	266	35.37	60.36	7.87
M3	800	346600	310	46.6	73.65	8.67
M4	880	37860	354	58.37	86.73	9.47
M5	960	353000	357	58.92	99.52	8.83
M6	1040	384999	410	74.94	115.15	9.63
M7	1120	417000	460	90.95	130.49	10.43
M8	1200	391399	455	87.87	142.23	9.79
M9	1280	423399	513	107.45	160.66	10.59
M10	360	455399	569	127.97	177.9	11.39

SPAN LOADING

TMH7 Part 2 NA + NB LOADING



Typical spacing = 1m c/c