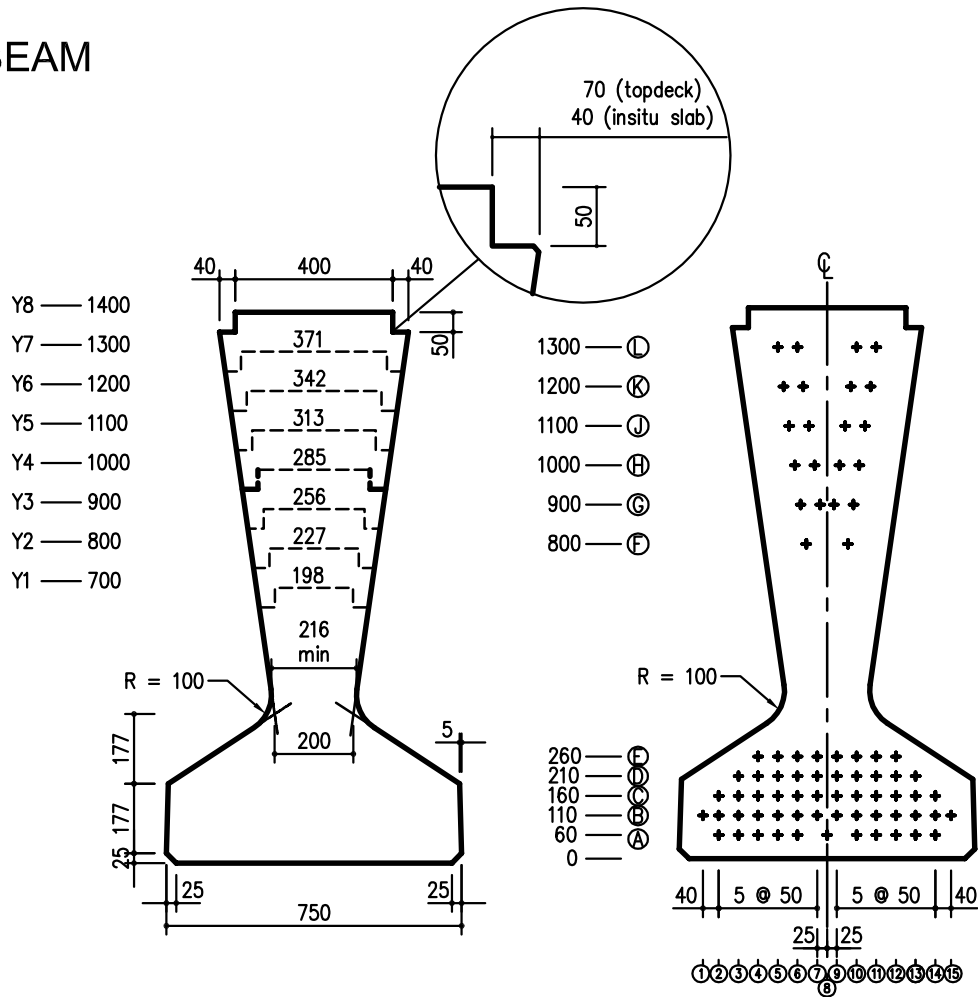


Y BEAM



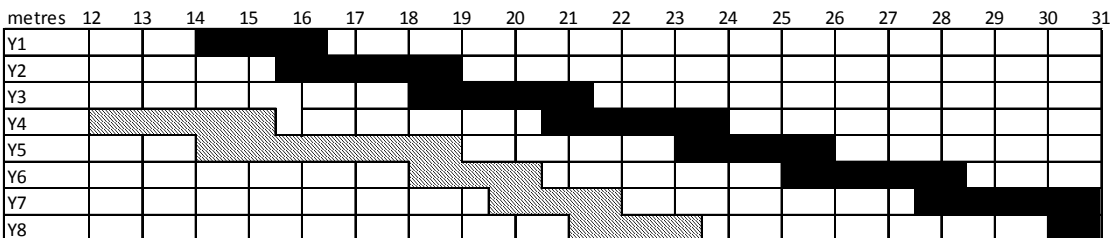
Section properties

Design self weight per unit volume has been taken as 25kN/m³

Section No	Depth (mm)	Area (mm ²)	Yb (mm)	Zt (mm ³ x 10 ⁶)	Zb (mm ³ x 10 ⁶)	App self weight KN/m
Y1	700	309245	255	24.78	43.24	7.73
Y2	800	339943	299	35.06	58.75	8.5
Y3	900	373525	347	47.9	76.33	9.34
Y4	1000	409990	400	63.59	95.38	10.25
Y5	1100	449339	456	82.13	116	11.23
Y6	1200	491572	515	103.69	137.92	12.29
Y7	1300	536689	576	128.28	161.24	13.42
Y8	1400	584688	639	156.07	185.86	14.62

SPAN LOADING

TMH7 Part2 NA + NB LOADING



LEGEND



Y Beams at 2000 centres



Y Beams at 1000 centres